



September Rimbey & Area Community Newsletter 2023

Recreation Services 403-843-3151
www.rimbey.com

Mass Registration

Thursday September 7th, 2023 3pm-7pm
At Peter Lougheed Community Centre
You will find registration for the following:

Family Resource Network
Rimbey Skate Club
Rimbey Nursery School
Art Fusion
Neighbourhood Place
Rimbey Boys and Girls Club

Zumba
Pilates
Yoga
Free Weights
Pickle Ball



The RIMBEY & AREA COMMUNITY NEWSLETTER -is brought to you by Rimbey Neighbourhood Place in partnership with the town of Rimbey Recreation Department and is available at: Neighbourhood Place, the Town Office, Rimbey Foods, the Tickle Trunk, Subway, COOP Please send us your submissions, questions or concerns: 4907 49th Street PO Box 980 Rimbey, AB T0C 2J0 phone:403.843.4304, text 780 887-2702 or e-mail: rimbeynp@telus.net

Rimbey Neighbourhood Place providing programs for families with children under 6



invites you to

come & see our **BRAND NEW SPACE** & what we are all about!

**Thursday,
September
21, 2023**

1 PM - 3 PM

At Rimbey Neighbourhood
Place - 4907 - 49 street

snacks & activities!

For more
information

text 780 887-2702

Financial contribution from
Public Health Agency of Canada Agence de la santé
publique du Canada

Made with PosterMyWall.com

Central Alberta Community Legal Clinic

The Central Alberta Community Legal Clinic offers free legal advice to those who do not qualify for Legal Aid and who cannot afford to pay a lawyer. The Legal Clinic offers advice in the areas of Family Law, Criminal Law, Guardianship/Trusteeship, and certain areas of Civil Law/Wills.

You must fill out an intake form in person or by phone before an appointment is booked. For criminal matters, you must have your disclosure before an appointment can be booked.

Phone: 403-314-9129 Toll Free: 1-877-314-9129

Rimbey Community Addiction & Mental Health Services

Free services offered by AHS for

Children and Adults, struggling with addictions, anxiety, depression or any other mental health concern.

“Hours of operation: Monday-Thursday 8:00-4:30p.m., Closed during the lunch hour 12:00-1:00p.m., Closed for Statutory Holidays. Please call the central intake line @ 1-888-594-0211 for an appointment.”

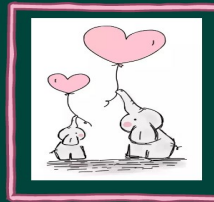


**Alberta Health
Services**



Neighbourhood Place
Program

MUMSTERS & BABES



a group for
parents with
kids under 2

Monday mornings 10:00 am - 11:30am

Register by text Please 403 872-1968

Financial contribution from
Public Health Agency of Canada Agence de la santé
publique du Canada

4907 - 49 street

Rimbey
Neighbourhood
Place

drop in

Grow and Play

Tuesday mornings -
9:30-11:30

Blindman Youth Action
Building

Financial contribution from
Public Health Agency of Canada Agence de la santé
publique du Canada

Rimbey Neighbourhood Place

Parents Time Out

Connection, support, and self care for parents of young
children - with child care provided

Thursday Morning 9:30-11:30,

registration required - text Sam @
403 872-1968

located at the Blindman Youth Action Building 4907 - 49 street

Financial contribution from
Public Health Agency of Canada Agence de la santé
publique du Canada

Rimbey Library

For more info. Check <http://rimbeylibrary.prl.ab.ca>

403 843-2841

We are now closed on Mondays until May 6th, 2024

Tuesday Mornings 10:30 am – Storytime with Sue

Wednesday

Wacky Wednesday – 3:30 pm

Thursdays

Sept 7th - Movie Night at the Library sponsored by

The Rimbey Lion's Club – 6:30 pm – Inside Out

Sept 14th – Heritage Family Services Information

Evening 5-7 pm Sept 28th – Book Club – Mad Honey by Jodi Piccoul 7:00 pm

Fridays

Sept 8th – Music in the Park – Daniel Gervais –

7:00 pm Sept 15th – Amnesty International Short

Movie and Discussion – Blood & Water 7:00 pm

Sept 22 – Fantastic Chef Friday 2:00 pm

Saturday

Sept 2nd – CLOSED Sept 16th – Dream Catchers

Workshop – 10:30 am – 4:30 pm Limit of one dream

catcher per family Sept 23rd - Afternoon Matinee

sponsored by The Rimbey Lion's Club – Dora and

the Lost City of Gold – 2:00 pm

For local history check out the Smithsonian Museum at Pas-ka-poo park and the Beatty Heritage House. More information can also be found in the Rimbey Tourist Guide—pick it up at downtown businesses and the Tourist Information Booth.

Rimbey Royal Canadian Legion News

*Legion Bingo - the 2nd & 4th Friday of the month. Doors open @ 6:30 p.m. Bingo Starts @ 7:00p.m. ** Progressive BINGO.*

For Legion Hall Rentals call: 403 843-2184 or 403 843-2343.

*For Legion Memberships call
403 843-2464*

Rimbey & District Victim Services

Working in partnership with the Rimbey RCMP, Victim Services provides information, support, referrals and court support to victims of crime. We act as a liaison between the RCMP and victims. Learn about us at www.rimbeyvictimservices.com Contact our office 403.843.8494 We are a proud member of Victim Services Alberta.

Fresh Apple Cider

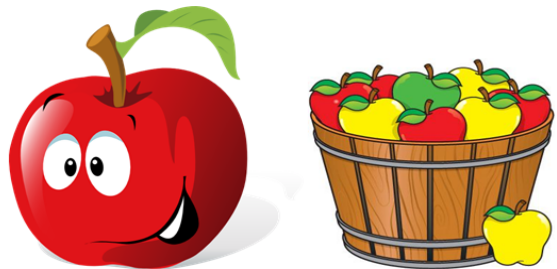
The Farmers' Market will have their apple press set up at the market

Saturday September 2nd

9:30am-11:30 am, Quality Inn

Bring your apples and containers for cider. We press the apples, you take

home fresh apple cider



**The best way to
predict your future is
to create it.**

Abraham Lincoln

**“Respect your parents.
They passed school
without Google.”**
– Anonymous



The *Community Wellness Association* is a group of citizens who meet once a month in the hope of addressing community social issues. Please call 403 843-4304 for more info.

Need to Talk? We're Listening.

Finances should never be a barrier to mental health support. We offer options for low cost and subsidized counselling services

Sessions are currently being offered virtually, by phone, and in person.

Call (403) 347-8844 or email info@cssalberta.ca to inquire.



cssalberta.ca



Settlement Support in Regional Communities:
Supporting Newcomers in Central Alberta
Do you know anyone who is new to Canada? Or, maybe you are a newcomer yourself?

The Regional Settlement program (through Central Alberta Refugee Effort, Red Deer) offers Permanent Residents support, information, and referrals on:

Documentation and Basic Needs

Improving English Language Skills

Interpretation and Document Translation

Settlement support in schools

Community Connections

Canadian Culture and Society

Volunteer and Employment Opportunities

Please contact our C.A.R.E. Regional Settlement Practitioner:

403-318-1706 regionalsettlement.care2centre.ca
www.immigrant-centre.ca

Alzheimer Society

ALBERTA AND
NORTHWEST TERRITORIES

Alzheimer/Dementia

Drop-in Care Partner Support Group

We invite you to join us...

Where: Rimbey Provincial Building
FCSS Boardroom
5025 55 St.
Rimbey

When: 4th Tuesday/month

Time: 10:30-noon

This is a drop-in support group for care partners, allowing them to meet with other care partners who are experiencing similar situations. Care partners will have a chance to connect with others and share what is going well and not so well, while talking about any other topics or questions.

For further information, please call: 403-342-0448 ext. 706

WWW.ALZHEIMER.AB.CA | WWW.ASANTCAFE.CA | 1-866-950-5465

RIMBEY AA Meetings
Anglican Church - 5207 52 Ave
Wednesday Evenings @ 7:30

The Rimbey Medical Clinic is pleased to announce the initiation of a screening program for at risk seniors. The goal is to identify older adults that may have characteristics of frailty. We can then implement supports, treatments, and/or investigations to improve health outcomes, independence, and resilience. Patients must have a physician at the Rimbey Medical Clinic, be 75 years or older and meet certain criteria.